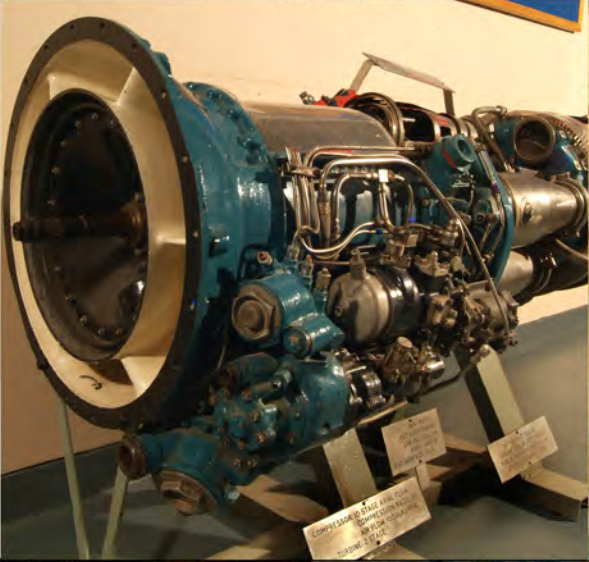
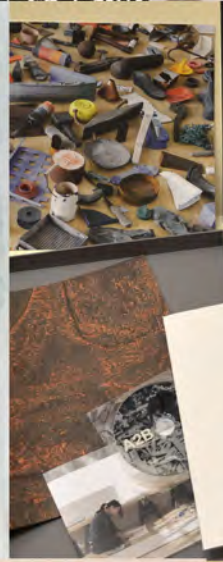


Museum Services

Annual Report 2015-16





Introduction

The past year has one of the most successful in the history of Museum Services. Overall we have seen an 89% increase in the number of people making active use of our services, including a 94% increase in student contact, a 121% increase in participation in our public events and a 137% increase in visitor numbers in the Zoology Museum.

Highlights of the past year include getting our collections database online, having new lighting installed in the Lamb Gallery and jointly winning the Stephen Fry Award for the Great War Dundee project. Our exhibition programme included a unique partnership with acclaimed author Reif Larsen in the Tower Foyer Gallery, a celebration of Patrick Geddes's landmark book *Cities in Evolution* in the Lamb Gallery and a collaborative exhibition with mathematical biologists at Dundee Science Centre. At the end of the year we were delighted to have our status as an Accredited public museum re-confirmed by Museums Galleries Scotland and Arts Council England.

All of this activity has happened thanks to the grant from Museums Galleries Scotland which enabled us to employ Hope Busák as Assistant Curator. Unfortunately this grant is soon to run out, and unless we are able to find a new source of funding then drastic cuts to our service will be unavoidable next year.

Matthew Jarron
Curator of Museum Services
Culture & Information
University of Dundee

6,558
ACTIVE USERS OF
THE MUSEUM
SERVICE

www.dundee.ac.uk/museum



Museum Collections - University of Dundee

@UoD_Museums

“Gorgeous and very thought provoking” - visitor to *Sculptural*



Exhibitions

One of our main aims is to provide an exciting and inspiring exhibition programme. In the absence of a permanent museum building, temporary exhibitions are our principal method of showcasing the collections. During 2015-16 we put on twelve public exhibitions, mostly in our regular spaces but also at Duncan of Jordanstone College of Art & Design and Dundee Science Centre.

A major improvement to our largest venue, the Lamb Gallery, took place at the start of 2016, when after a long wait we finally had a new lighting system installed, thanks to grant funding from Museums Galleries Scotland. This has made a notable difference to the space and we are grateful to the University's Estates & Buildings for organising this for us.

Unfortunately this year has also seen a significant reduction in opening hours of the Tower Building due to the relocation of security staff (the building now closes at 7pm rather than 9pm during the week and is only open 1-5pm on Saturdays). This has affected both the Tower Foyer and Lamb Galleries and as a result our total visitor numbers for the latter have fallen by over a third to just over 20,000.

Several of our exhibitions were created in collaboration with staff and students, including *Nature's Equations*, an exhibition on mathematical biology at Dundee Science Centre, showcasing current research by Mathematics staff, and *The City is a Thinking Machine*, the result of a research project led by Lorens Holm involving staff and students from Architecture and Town & Regional Planning. Exhibitions like these are an excellent example of how we can help academic staff to engage with a wider audience and can form part of future REF impact submissions.

Tower Foyer Gallery

A History of Nearly Everything (10 October - 28 November 2015) – an exhibition of the scientific imagination by author Reif Larsen as part of Dundee Literary Festival

Avem: A Journey with Birds (5 December 2015 - 13 February 2016) – drawings and screenprints by DJCAD graduate Lara Scouller

Transforming Lives through Education & Social Work (27 February - 30 April 2016) – an exhibition on the history of the School

Art in Relief (6 May - 25 June 2016) – woodcut and linocut prints shown as part of Print Festival Scotland

12
EXHIBITIONS
20,314
VISITS TO THE LAMB
GALLERY

Lamb Gallery

The City is a Thinking Machine (17 October - 12 December 2015) – marking the centenary of Patrick Geddes's *Cities in Evolution*, a collaboration with Architecture and Town & Regional Planning

Sculptural (23 March - 7 May 2016) - highlights from our sculpture collections

Macoto Murayama: Growth and Form (14 May - 20 August 2016) – stunning botanical art, staged as part of the Ignite Festival

D'Arcy Thompson Zoology Museum

Pole Tay Pole (12-14 February 2016) – work by Illustration students inspired by whaling and exploration

Duncan of Jordanstone College of Art & Design Entrance

John Duncan (1-28 July 2016) – a small display to mark the artist's 150th anniversary

Dundee Science Centre

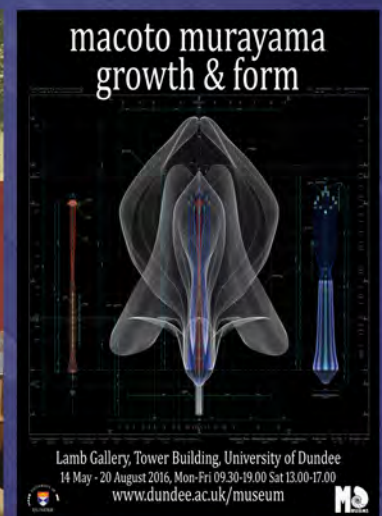
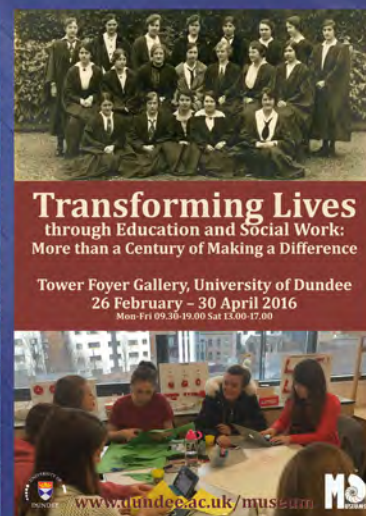
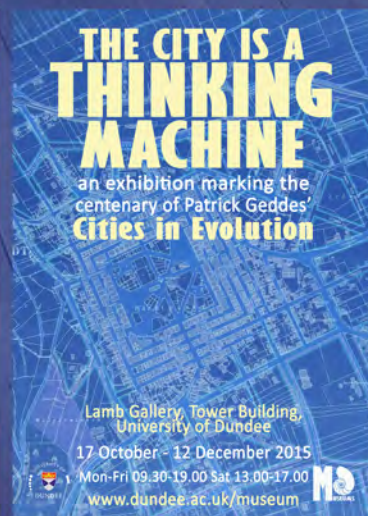
Nature's Equations: D'Arcy Thompson and the Beauty of Mathematics (22 August - 25 October 2015) – a collaboration with Mathematics researchers

Evolution, Extinction & Good Eatin' (10 February 2016 - present) – a display in Dundee Science Centre showing skeletal material from the D'Arcy Thompson Zoology Museum

As well as curating our own shows, in the past year we lent 81 items from the collection to other exhibitions on campus, including four exhibitions in LifeSpace and two artists' books exhibitions in CentreSpace.

We also lent 67 objects to other exhibitions elsewhere. The most notable of these was *My Love is Like a Red Red Rose*, a significant survey of Scottish art shown at the Musée du Château des Ducs de Wurtemberg in Montbéliard, France. We were the principal lender to this exhibition, and our magnificent painting of the 4th Earl of Fife by Sir Henry Raeburn was used as the main poster image. Other highlights include *A Spanish Sunday* being selected for the Arthur Melville show at the Scottish National Gallery, artefacts from the Medical History Museum being shown in the National Library of Scotland's *Plague* exhibition and 25 items lent to a *Home Front* exhibition at Kirriemuir Gateway to the Glens Museum.

67
LOANSTO
OTHER MUSEUMS
& GALLERIES



“Possibly the most beautiful images I have ever seen”
- visitor to Macoto Murayama exhibition



Permanent Displays

The D'Arcy Thompson Zoology Museum continues to be our principal permanent display, open regularly on Friday afternoons during the summer, and for special events throughout the year. The museum has proved particularly popular this year, with 2,934 visitors (a 137% increase on last year).

We have also been hard at work creating a new permanent display for the Tayside Medical History Museum at Ninewells Hospital, showing some of the highlights from our extensive medical collections. The new display is now complete and will be formally launched later in 2016.

In collaboration with the Satellite Receiving Station, we created a new permanent display in the Ewing Building, describing the history of the Station, the building and Prof J A Ewing himself.

As part of our on-going aim to enhance the cultural ambience of the campus, we put up 82 works of art on long-term display in ten different schools and departments around the University, including External Relations, Human Resources, Student Services and the Institute of Medical Science & Technology. Our two largest projects were in the School of Nursing & Health Sciences' Kirkcaldy campus (15 artworks throughout the building) and the School of Humanities' corridors in the Tower extension (42 artworks on three floors).

"I love the way art and science have been brought together in such a thoughtful way."

- visitor to the D'Arcy Thompson Zoology Museum

82
ARTWORKS PUT
ON DISPLAY
AROUND THE
CAMPUS



Collections

During the past year, 977 items were catalogued and added to our museum database, bringing the total number of accessioned items in the collection to 30,712. The largest part of this comprised the collection of pathology specimens held at Ninewells Hospital, which had been languishing in cupboards for many years unused, but which the department is now keen to make more accessible for teaching and research purposes. Thanks to our student volunteer Danielle Dray, 589 specimens have been accessioned so far.

Other notable additions include a collection of birds eggs and other natural history specimens originally used by Dundee College of Education; various pieces of equipment from the Satellite Receiving Station in the Ewing Building and a significant number of laparoscopic instruments from Ninewells Hospital.

With the help of funding from Duncan of Jordanstone College of Art & Design, we continued to acquire a selection of art and design pieces from the Degree Show. DJCAD also purchased works to add to the artists' book collection, abcD, including several rare pieces by or about Yoko Ono. Other purchases include a painting by former Duncan of Jordanstone student and lecturer Ian Eadie and a pair of stunning glass pieces by Danish artist Steffan Dam.

Donations made to the collections in the past year include pieces by former Graphic Design student John T Symington, gifted by his widow; a folio of prints by Calum Colvin, donated by the artist; and a large collection of display boards from the pioneering MA in Public Art & Design introduced at Duncan of Jordanstone College in the late 1980s, gifted by tutor Ronnie Forbes. We are very grateful to all the generous donors responsible for these and other gifts.

A notable step forward in making our collections more accessible was achieved this year with the launch of our online database, allowing researchers and members of the public to see all our collections via www.dundee.ac.uk/museum/collections/search/. Allied to this, our volunteers have been steadily adding images of those parts of the collection that had not previously been photographed. In all, 6,915 images were added last year.



2,238
PARTICIPANTS IN
36
SPECIAL EVENTS

Audiences

A key aim of the museum service is to extend our reach to allow as many people as possible to enjoy and be inspired by our amazing collections. As well as our exhibitions and permanent displays, we stage a variety of special events aimed at attracting different audiences. In the past year we held a record 36 public events, including:

Our regular programme of evening events in the D'Arcy Thompson Zoology Museum, which this year included creative writing, chocolate tasting, a comedy panel show (*Just a Mammal*) and talks by University researchers including Terry Dawson, Ioan Fazey and Mark Field

An interdisciplinary discussion event called *Comics and the City* to tie into last year's *Jim Petrie* exhibition, bringing together staff from Humanities, DJCAD and Town & Regional Planning as well as the public art officer from Dundee City Council

A walking tour of public art in Dundee to accompany the *Sculptural* exhibition

A standing-room-only launch event for curator Matthew Jarron's new book on *Art in Dundee 1867-1924*

Special openings and tours for Doors Open Days and Dundee Christmas Street Festival

An artist's talk by Macoto Murayama, thanks to funding from the Great Britain Sasakawa Foundation

Around 1,500 people also attended talks by museum staff given at public events (including Dundee Design Festival and the Scottish Society for Art History's *Women in Scottish Art* study day at the Scottish National Gallery) or to external organisations (such as Monifieth Probus Club, the Abertay Historical Society and the Guildry of Dundee).

Numerous societies, professional bodies and community groups also visited our exhibitions and collections during the past year, including the Carse Association for Continuing Education, Dundee Association for Mental Health and the Chuckles Club (an Ardler community group).

We also aim to connect with audiences globally through our online resources. A notable initiative this year has been working in partnership with Caroline Erolin from the Centre for Anatomy & Human Identification, who has been creating 3D scans of specimens from our zoology collections. These are made available as a free learning resource through the Sketchfab website, and in just a few months have already been accessed by users in at least 22 countries worldwide.

Thanks to assistant curator Hope Busák we have been very successful in developing our schools programme, designing and delivering workshops that connect our collections to the Curriculum for Excellence. We worked with nine local primary schools in the past year - six of these are classified as SIMD 40 schools (ie in the most deprived parts of the country), thus supporting the University's commitment to widening access. We have also been working with local teachers through CPD events, encouraging them to find out more about what we have to offer. Through the School of Education & Social Work, we also work with student teachers, encouraging them to try object-based learning in their school classes.

“Huge thanks for your visit this afternoon. The class really enjoyed it. It was so good to see how engaged they were... This was a lovely experience to add to what we have been covering in class.”

**– Lynsey Grubb, PGDE student teacher,
Sidlaw View Primary School**



Students

The University of Dundee is renowned for the quality of its student experience, and as a university museum, supporting our students is one of our most important priorities. In the last year, a record 1,525 students from 25 undergraduate or postgraduate courses at the University made use of our collections and staff expertise as part of their coursework or individual projects. 1,082 of these involved direct contact with museum staff, a 94% increase from last year.

Undergraduate

Anatomy
Biological Sciences
Biomedical Sciences
Forensic Anthropology
Medicine
Education
Environmental Science
Philosophy
Psychology
Town & Regional Planning
DJCAD General Foundation Course
Animation
Art, Philosophy & Contemporary Practice
Textile Design
Illustration
Jewellery & Metal Design
Fine Art
Product Design
Time Based Art & Digital Film

Postgraduate

MSc Anatomy & Advanced Forensic Anthropology
MSc Medical Art
MFA Art, Society & Publics
MFA Arts & Humanities
PGDE Secondary Education
MLitt Comics Studies

plus the
English for International
Students preparatory course

1,525
STUDENTS
FROM
25
COURSES USE THE
COLLECTIONS

A particularly successful project was 'From the Ends of the Earth', a brief created by museum staff for third year Illustration students. After researching connections between Dundee's whaling industry and polar exploration, the students staged an exhibition of their artworks called *Pole Tay Pole* in the Zoology Museum.





We also provided five formal work placements for undergraduate and postgraduate students from the Universities of Dundee, St Andrews and Aberdeen, plus informal work experience for a further eight students or graduands.

Students from various other institutions also came to use the collections, including Dundee & Angus College, Perth College and Glasgow School of Art. The Curator also continued to teach evening classes in film history for Continuing Education.

“Part of my second year was a Learning from Life placement which I completed at the University of Dundee Museum Services. The experience that I gained from this was second to none. I was working with the museum collections in order to produce educational workshops for schools to use. I gained a great amount of confidence working with different age groups and by composing different workshops. It also allowed me to refine many teaching skills and strategies. My supervisor was Hope Busák and she was absolutely brilliant to me from the first minute I walked in. She is such an enthusiastic individual and a huge asset for the Museum Services. My experience was so enriched and this was all down to her.”

– Ben Neighbours, 2nd Year Primary Education student

“Working with the museum has really helped me develop personally and professionally. I've met loads of fantastic people, and I've had the chance to do and see things I never thought I would. It's a privilege to help care for such a special collection :)”

– Danielle Dray, MLitt student on placement

342

ENQUIRIES

173

RESEARCH VISITS

Research

Supporting the local and international research community is an important part of our service. During the past year we answered 342 enquiries (a 10% increase on last year) on a variety of topics including Victorian fern collector Mrs Jaffrey, artist Patrick Hennessy, the use of antique casts in art pedagogy, connections between art and whaling and the role of poetry in museums. 174 of these were from University of Dundee staff and students while 170 were external researchers. 173 research visits were made to view material from the collections, 107 from within the University and 66 from external researchers, including postgraduates and staff from the University of St Andrews, Newcastle University and Ruskin School of Art. For much of the year we have also hosted a Fulbright Scholar, Jan Johnson, who has been doing in-depth research into our Needlework Development Scheme collection.

The creation and dissemination of new knowledge relating to our collections is also an important aim, and December 2015 saw the long-awaited publication of curator Matthew Jarron's book *Independent & Individualist: Art in Dundee 1867-1924*. Described by art historian Elizabeth Cumming as "one of the most important books on Scottish art to have emerged in a long time", it has since been nominated for the William M B Berger Prize for Art History.

Matthew also published papers last year in the *Journal of Illustration* and the *Journal of the Scottish Society for Art History* and contributed an essay to the Dundee Design Festival programme.



"INDEPENDENT & INDIVIDUALIST"
ART IN DUNDEE 1867-1924

This lavishly illustrated book explores in detail the period when Dundee was recognised as one of the major art centres of Britain. In the late 19th century, the city staged the largest exhibitions of art outside London and hosted some of the most ambitious private art collections in Scotland. Following a significant development in art education, the number of professional artists working in the city increased dramatically. Thanks to the unique talents of John Duncan, Stewart Carmichael, George Dutch Davidson and others, Dundee developed a distinctive new style of art, a fusion of symbolism, decorative art and the Celtic Revival. The city also produced exceptional talents working in landscapes and portraiture, such as David Foggie, Frank Laing and W B Lamond. At the same time, there was a boom in commercial art as Dundee became an important centre for newspaper and magazine illustration.

This is the first time that Dundee's art culture has been studied in depth, placing the city's artistic outputs in a social, economic and political context. One London critic described Dundee's artists as a "fiercely independent and individualist school", which has often led them to be overlooked by art historians. This book seeks to re-establish the significance of Dundee as "perhaps the most vital centre of art appreciation in Scotland."

Matthew Jarron is Curator of Museum Services at the University of Dundee and a former Chair of the Scottish Society for Art History. He is the author of several publications linked to exhibitions he has curated, including *David Foggie: the Painter's Painter* and *A Glimpse of a Great Vision: The D. Argy Thompson Zoology Museum Art Fund Collection*. He has edited or co-edited issues of the *Journal of the Scottish Society for Art History*, *Museum Management & Curatorship* and *Interdisciplinary Science Reviews* and is Secretary of the Alcey Historical Society.

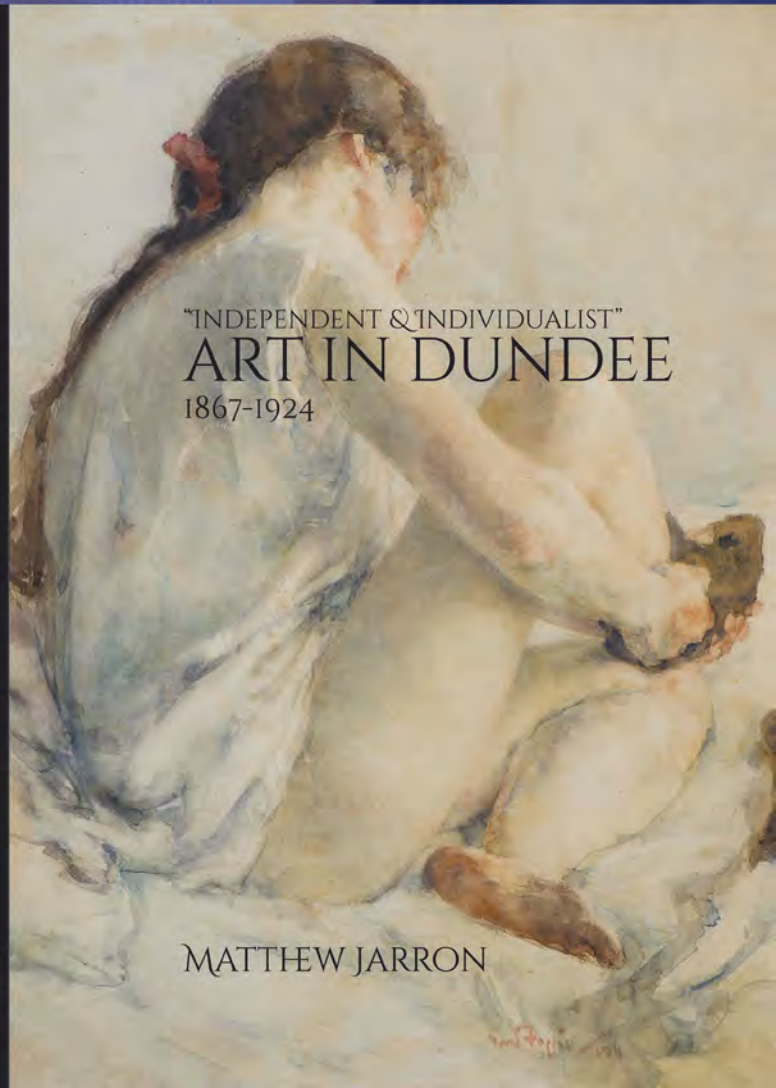
Front cover: David Foggie, *Getting Up*, 1911
(Dundee City Council: Dundee Art Galleries & Museums)

Back cover: John Duncan, *The Clave of Light*, 1897
(University of Dundee Museum Services)

ISBN: 978-0-900019-56-2



"INDEPENDENT & INDIVIDUALIST"
ART IN DUNDEE 1867-1924



"INDEPENDENT & INDIVIDUALIST"
ART IN DUNDEE
1867-1924

MATTHEW JARRON



Partnerships

As a small service we are always keen to work in partnership with other organisations to maximise the impact and effectiveness of what we do. Some of the activities undertaken in the past year were:

Great War Dundee – Museum Services continues to play a key role in this city-wide partnership, helping to organise the hugely successful commemorative activities which saw Dundee named by the Scottish Government as the official centre for the Battle of Loos centenary. In partnership with Dundee Contemporary Arts, Matthew organised the commissioning of a new score for long-forgotten silent film *The Guns of Loos*, which was shown to a sell-out audience at DCA. Further performances have since been held in Edinburgh and London, and the film is soon to feature as a main attraction in Pordenone, the world's most prestigious silent film festival. In January 2016 Great War Dundee won the Stephen Fry Award for Public Engagement.

Discovery Walk – Matthew was one of the organisers of a popular public art project celebrating significant Dundonians through a series of plaques at the new waterfront designed by artist Suzanne Scott. Nine of the ten people commemorated so far have University connections, and their plaques were unveiled in the new Mary Slessor Gardens in April 2016.

Tayside Museums Forum – we hosted a training session for members on the use of Wikipedia for museums and have been working on a collaborative funding bid for the forum.

Matthew also serves as Secretary of the Abertay Historical Society and is a member of various other networks and collaborations including the Dundee Cultural Agencies Network, the Scottish Society for Art History, Scotland & Medicine and UMiS (University Museums in Scotland).



Staff

Curator

Matthew Jarron

Assistant Curator

Hope Busák

Volunteers and Work Placements

Lily Barnes

Lauren Beatty

Richard Blackmore

Susanne Boersma

Cathy Caudwell

Laura Dowie

Danielle Dray

Allyson Fraser

Sophie Haddon

Marta Heise

Caitlin Luke

Angela Mehlert

Caitlin Meldrum

Lucy Moore

Ailsa Morris

Lucy Naughton

Ben Neighbours

Ross Pollard

Jade Reid-Harper

Nicolla Sanguinetti

As always, our volunteers are an invaluable resource and the service simply would not be able to function without them. We also receive advice and support for collections held by specific schools and departments from various honorary curators and contacts:

Civil Engineering Collection – Tom Dyer

Comics Art Collection – Chris Murray

D'Arcy Thompson Zoology Museum – Brian Eddy and Liz Laken

Dental School Collections – Mark Hector, Gavin McKay and Sam Cadden

Duncan of Jordanstone College Collection – Calum Colvin

Electrical & Electronic Engineering Collection – David Thompson

Law Collection – Robin White

Mechanical Engineering Collection – Lyall Mitchell

Pathology Collection – Richard O'Parka

Psychology Collection – Nick Wade

Physics Collection – Sandy Fitzgerald

Tayside Medical History Museum – position vacant

Visual Research Centre Collections (including Artists Book Collection Dundee) – Adam Lockhart and Hazel McDonald

Although we have not yet managed to find a new honorary curator for the Medical History Museum following the retirement of Dr Graham Lowe, the Curator continues to receive support from an informal museum committee.

Finance

Operating Budget 2015-16: £14,700

Scottish Funding Council annual grant: £11,500

We also maintain the remainder of the Fine Art Fund set up in 1960 for the benefit of the University's art collections. This stood at £3,455.30 at 1 Aug 2015 and £2,144.59 at 31 July 2016.

Grants awarded:

£1,000 (Great Britain Sasakawa Foundation grant towards our *Macoto Murayama* exhibition)

£8,360 (Museums Galleries Scotland grant for upgrades to the Medical History Museum stores)

£576 (Museums Galleries Scotland grant for our Festival of Museum Ferns & Fossils activities)

£1,267 (National Fund for Acquisitions grant to purchase one of Macoto Murayama's prints)

Loc : any place in The World

所在地 世界各所

Japanese Global-Datum :

世界基準

福岡	35° 17' 20.45" N,	139° 5' 18.41" E,
札幌	35° 15' 53.25" N,	139° 5' 36.24" E,
大野	35° 15' 53.71" N,	139° 7' 36.97" E,
酒匂	35° 15' 57.87" N,	139° 1' 47.89" E,
Boval	47° 34' 36.81" N,	7° 35' 11.97" E,
Southemson-Sea	51° 32' 33.19" N,	0° 43' 39.52" E,
Liverpool	53° 32' 2.54" N,	2° 57' 42.97" W,
Berlin	52° 32' 16.36" N,	13° 23' 44.97" E,
Bruxelles	50° 48' 23.47" N,	4° 22' 53.81" E,

Date : 2013 - 2015

採集時期 2013年 - 2015年

Coll : macoto murayama

採集者 村山 真

