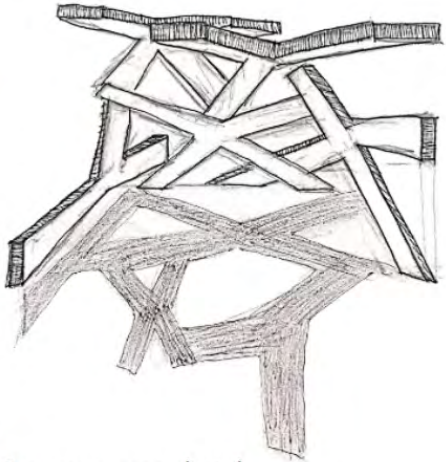


Submission Folio

BDes Interior & Environmental Design



Rendered sketch on paper



Pen on paper sketch



Rendered sketch on paper



Final concept paper model



For my project I was given a brief to create a structure to represent one of the goals from the Paris agreement in 2015. My brief was to develop a design that symbolised gender equality. I brainstormed ideas on how to represent male and female whilst also portraying the message of balance between the two. Having studied Biology I knew about DNA sequencing and the X and Y chromosomes which represent male and female DNA. I decided to use this knowledge to develop an idea to use the X and Y symbols to create an initial symmetrical structure. My final concept was a more dynamic form but still relying on balance.

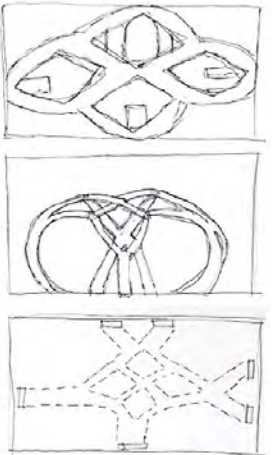
# Exhibition Project



Mood Board



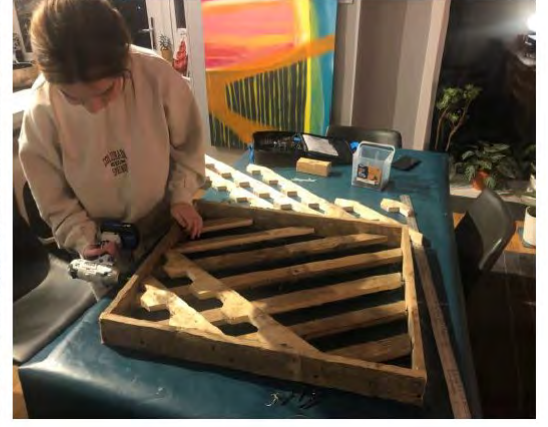
Concept 1 paper model



Concept 1 sketch plans

# Pallet Recycling

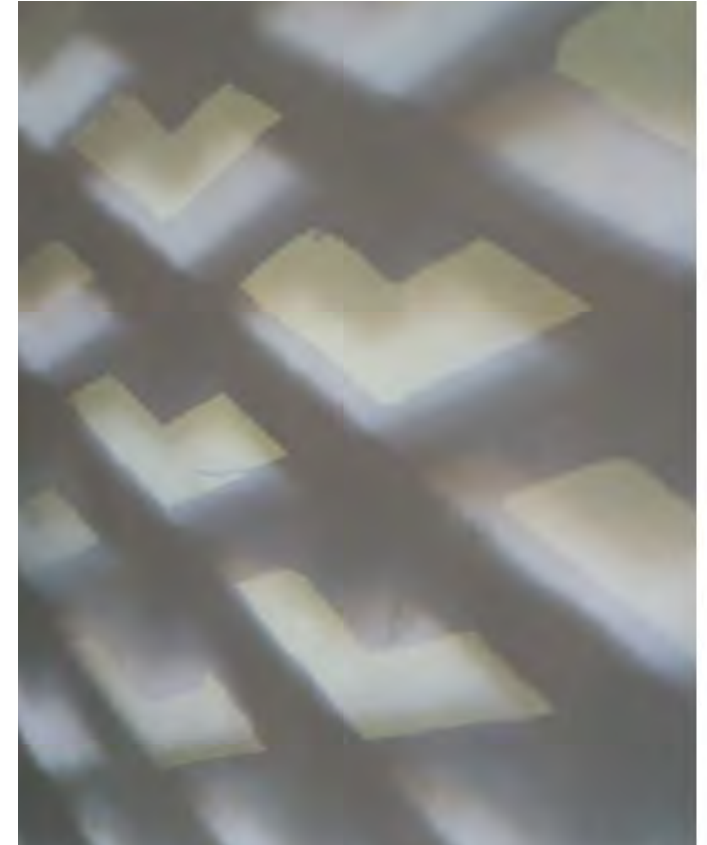
I decided I wanted to create a piece of wall art which eventually would be lit up. After developing my idea and making the prototype I made a stencil that was to scale for the final piece. I measured all of the wooden strips and cut each one with the repeated pattern then constructed them to reflect my prototype. Once I had completed the structure I fixed a white translucent sheet to the rear of the frame and placed a light behind so it would illuminate in the dark increasing the contrast between the solid and void.

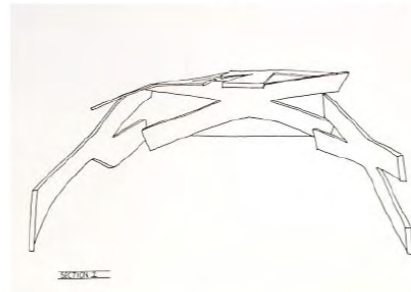
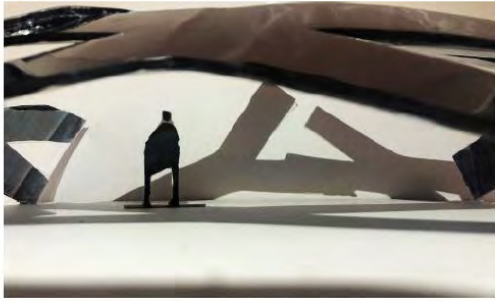
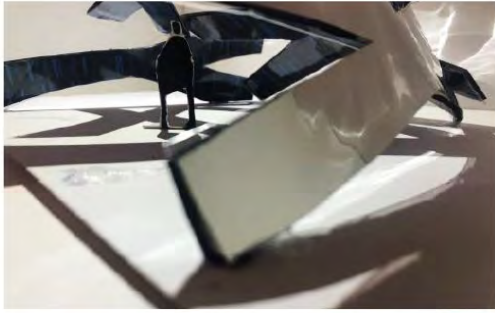


Prototype model - cardboard

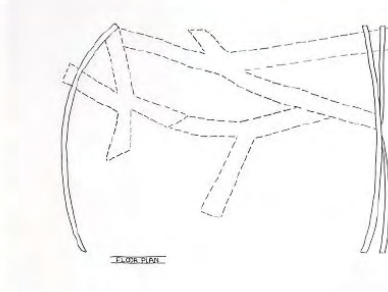


Final concept model – pallet timber and translucent sheet





Sectional elevation



Floor plan

The DNA sequencing featured inside the exhibition structure symbolises that everyone is human. The X and Y structures that are balanced against and on top of each other symbolise how balance between both male and female is what will ultimately result in equality. The exterior of my design would be made from a mirrored stainless steel to allow people to look and reflect upon themselves while also providing dramatic visual impact to the space. The inside of the structure would be made from a black glass interspersed with LED lights so that the sequencing would illuminate at night and become an immersive experience when walking under it.

## Exhibition Project



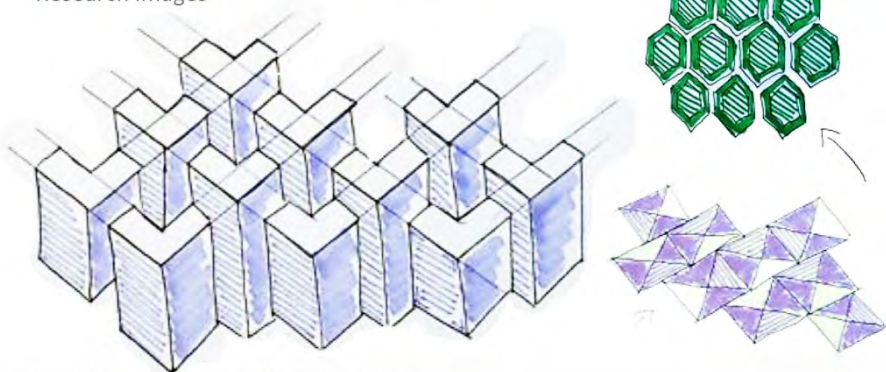
Final model

# Pallet Recycling

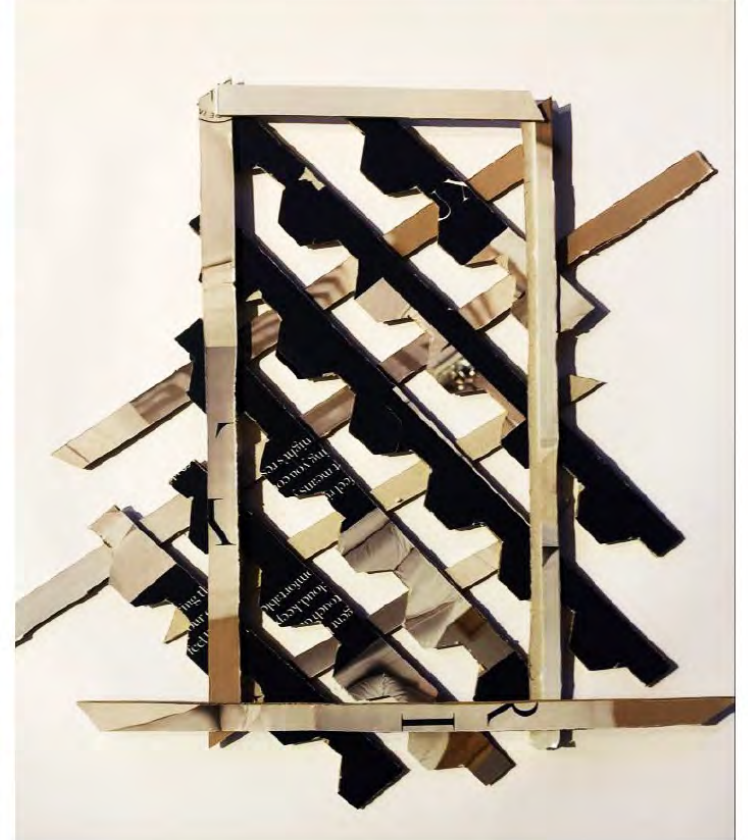
A recent press release reported 18 million pallets are manufactured for the UK construction industry however it estimates only 10% are currently reused. When some family friends were getting rid of some wooden pallets I considered these a perfect material to make an interesting art piece whilst also recycling what is typically considered a waste material. After some research, and due to the repeating elements within the pallet, I decided that doing a simple piece using repeated geometric shapes would be the most effective over all. I did some initial sketches and decided on the shape I wanted my structure to be and then made a prototype model from a cardboard box, experimenting with some interesting patterns, forms and colours.



Research images



Geometric sketches – Pen on paper



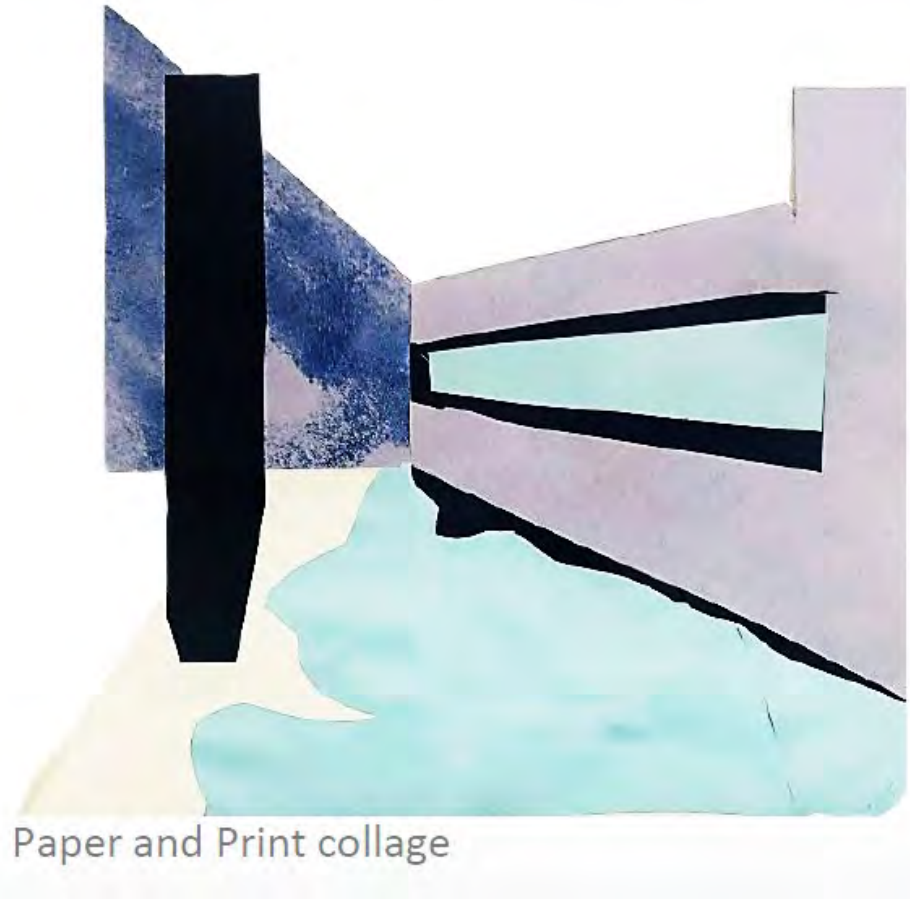
Prototype sketch models – Cardboard and coloured film

# Collage

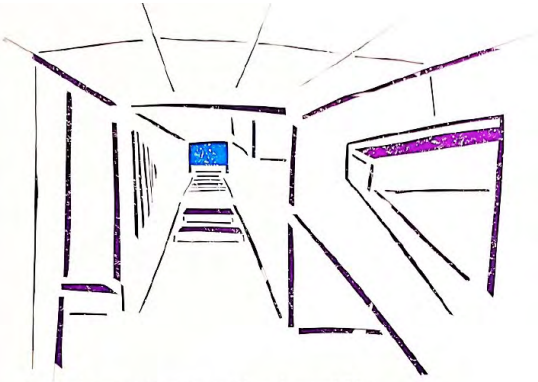
I first took interest in a Japanese architect named Tadao Ando after my dad went to visit some of his fascinating structures and buildings in Japan and he introduced me to his work. He has a common theme thought each of his structures using solid and void in the most simple way while also using the source of light as one of the main features to his designs. I took inspiration from some of his work to create some collage pieces and reflect his simplistic style through each development.



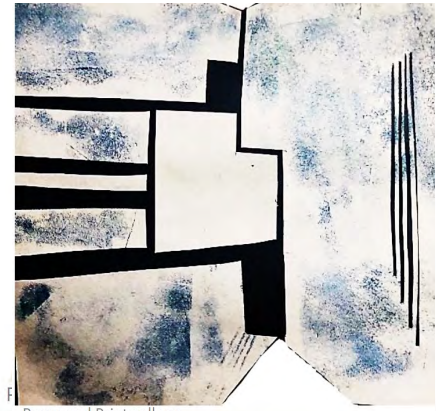
Research images



Paper and Print collage



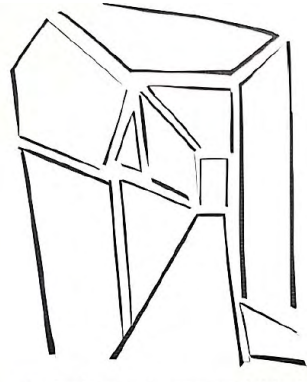
Scalpel cut out paper with coloured film



Paper and Print collage



Paper and Print collage



Scalpel cut out paper with black paper



I started developing my interest in perspective drawings while completing my higher art portfolio for a travel poster for the city of Havana. Each development featured different angles and views of the streets capturing the vibrancy of the buildings. I also took a walk round the centre of Glasgow finding interesting perspectives of streets and lanes to sketch. I have also practiced perspective drawings while completing my college projects.

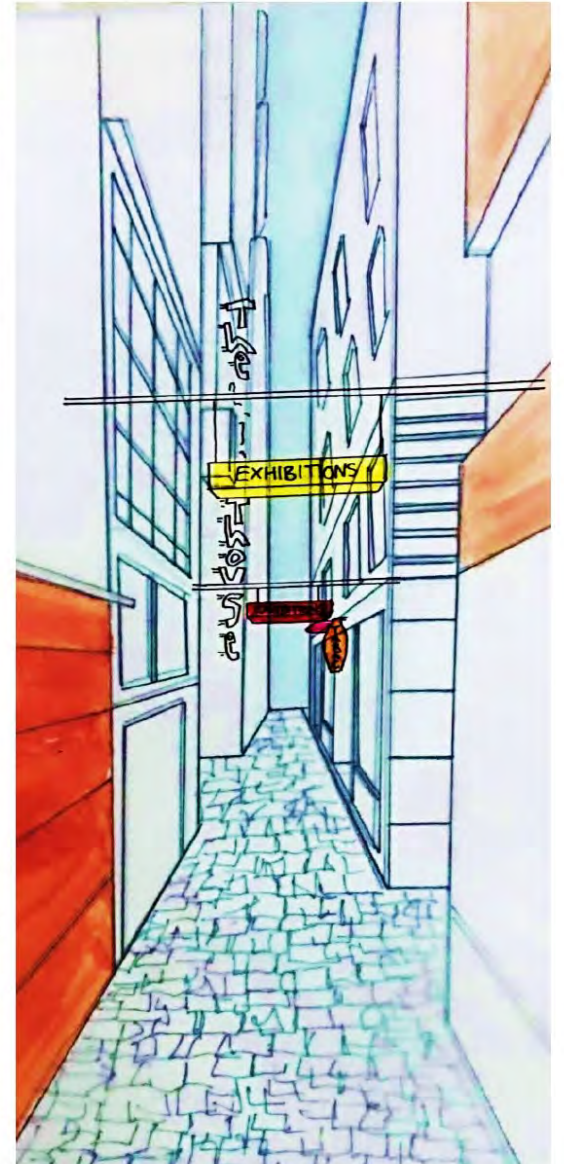


Watercolour on paper

# Perspective Drawings



Glasgow sketch studies - Pen on paper



Pen on layered tracing paper

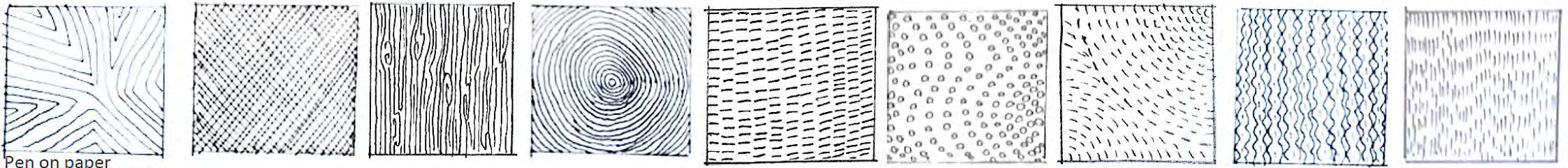


Café Interior - Pencil on paper









Pen on paper



Coffee stain on textured kitchen roll



Coffee stain on paper



Acrylic on paper



Acrylic on paper with coloured film



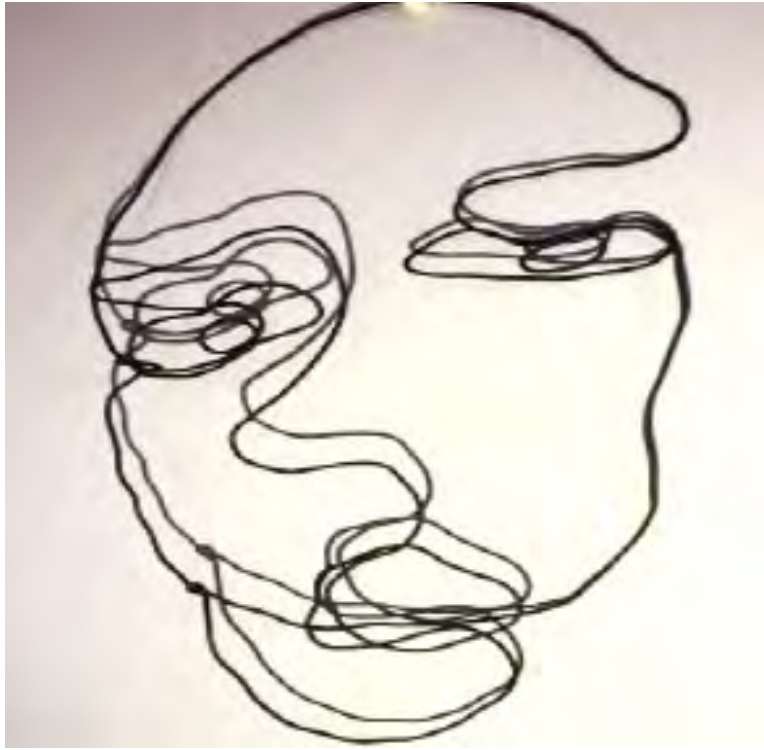
Acrylic on paper

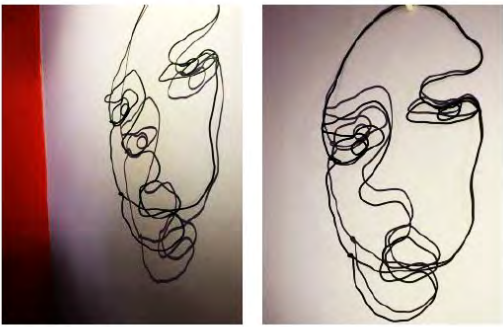


Photograph of Queen Street Station- Glasgow

I visited Glasgow Queen Street Station and took some photographs of the structures above the train tracks capturing the contrast between tones of the sky and metal poles and beams at that time of day. I took inspiration from the image to create my own monochromatic patterns reflecting the linear structure. I also created a natural pattern on kitchen roll whilst staining paper with coffee granules. After staining the paper I unravelled the kitchen roll and a interesting pattern appeared with some of the residue of coffee on it with some granules still attached. Pattern is important as it is able to create continuity within a space which can change the full feel of it. The repetition of pattern can also be calming and create a peaceful atmosphere in a space.

# Pattern





2D wire face



Pencil on paper



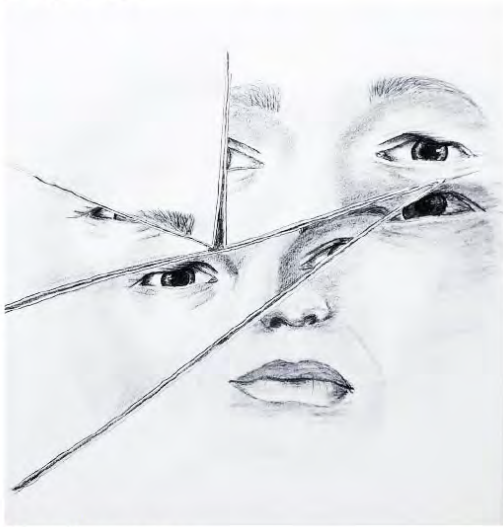
Pencil on coffee stain paper



Pencil on coffee stain paper



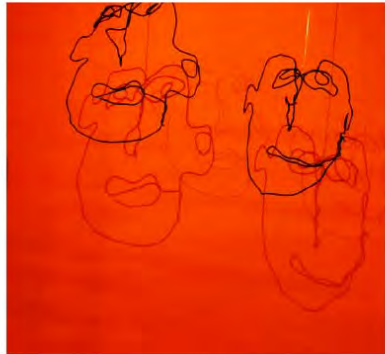
Pencil on coffee stain paper



Pencil on paper



Pencil on paper



3D wire faces and shadows

While visiting Kelvingrove Art Gallery I took inspiration from the hanging heads displayed. I found the varied facial expressions on the heads both amusing and interesting which lead me to do some detailed pencil studies on different parts of the face and body. This then developed from pencil drawings to creating faces out of metal wire, I started by doing 2D faces trying to capture different emotions and then went on to make 3D faces which created more interesting shadows and shapes .



3D wire faces and shadows



Pencil on paper with 2D wire face

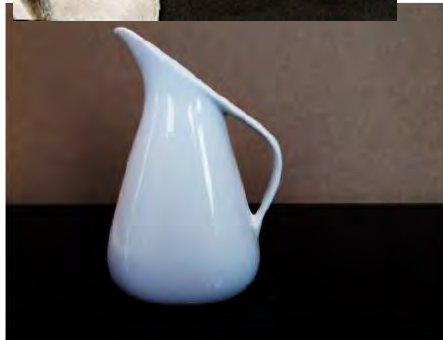
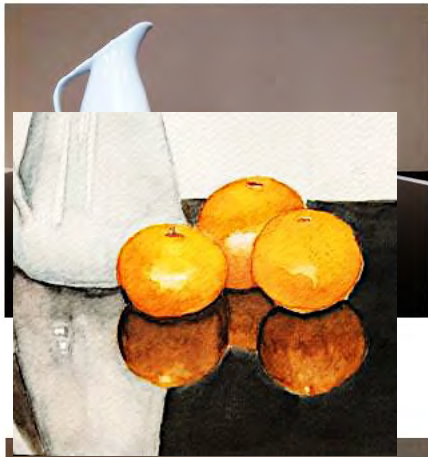


Photo from Kelvingrove Art Gallery

# Face and Body



Oil pastel on paper



Acrylic on paper

When researching a focus for my still life I took inspiration from an artist named Linda Alexander. Her work is mainly still life using very simplistic objects whilst also featuring different kinds of reflective objects and surfaces. I decided to theme my work using reflection as my inspiration. I took photographs of a variety of objects placing them on my reflective glass hob. By having minimal objects with a simple background I found it made the focus of my paintings more dynamic and effective.

# Still Life



Watercolour on paper

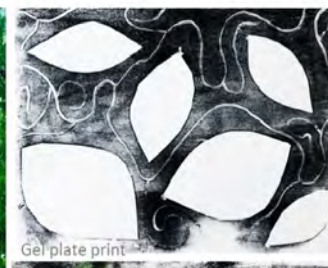
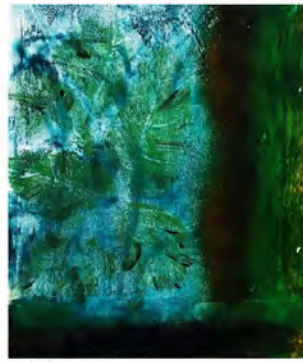


Acrylic print on paper



Still Life





Gel plate print

Gel plate print

Gel plate print

Acrylic on paper collage



Tissue paper collage

I experimented doing gel plate prints by creating vibrant colours and textures. I took pictures of some of the exotic plants I had in my house to inspire the focus of my prints. After applying paint I used different methods like scratching into the gel plate to replicate the veins running through some of the leaves. I discovered after a few attempts that the most interesting prints came out after the first layer of paint was removed from the gel plate and that the second paper placed on created more interesting shapes and textures. I also did a few pieces of collage, layering different tissue papers creating different colours. I tried to embrace the investigation of various processes and techniques to help visualise a good idea.

# Gel Plate Prints